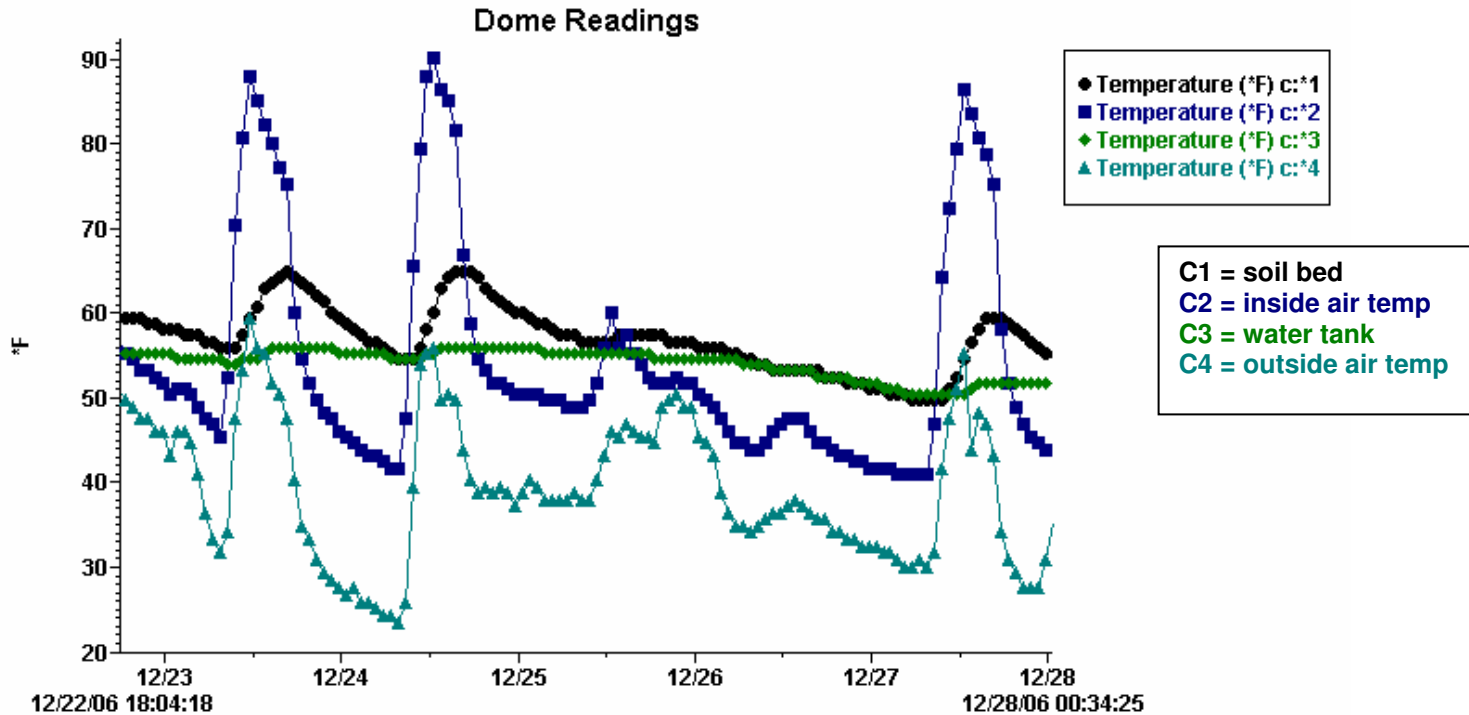


## Dome Temperatures on both cloudy and sunny days



Here you can see how the 23rd and 24th were sunny days with max inside the dome air temps of 90 degrees. Although external air temp fell below freezing on the 24th, internal air stayed above 40. The water tank held steady around 55, and the soil (temp probe at 3 inch depth) showed some variability. The 25th and 26th were cloudy. There is no afternoon spike in inside air temp, and the water and soil slowly cool.